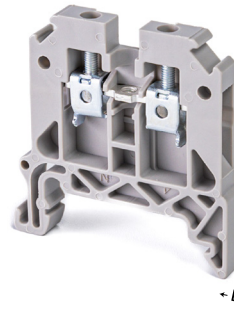


RT/SU2.5

(RTP2.5)



RT/SU2.5-H

(RTP2.5-H)



Technical data	RT/SU2.5		RT/SU2.5-H			
	Voltage(V)	Current(A)	Voltage(V)	Current(A)		
IEC 60947-7-1	800	24	500	24		
IEC/EN 60079-7	500	24	320	24		
IEC 60947-7-1 rated data						
Impulse voltage (kV)	6		6			
Pollution degree/ Voltage category/Material group	3/III/1		3/III/1			
Maximum Current (A)	32		32			
Maximum Conductor Cross-section (mm ²)	4		4			
Cross-section (mm ²)	2.5		2.5			
Description	Type	Ordering No.	Qty.	Type	Ordering No.	Qty.
Terminal block, for mounting on TH 35-7.5, 15	RT/SU2.5	60104020	100	RT/SU2.5H	60104010	100
End plate Width (mm)	EP-RTP2.5 1.5	60202020	100	EP-RTP2.5H-10 1.2	60202021	50
Partition Width (mm)	P-RTP2.5 1.6	60203010	100	P-RTP2.5H-10 1.6	60203011	50
Small partition no loss of pitch	SP-2.5-10	6020304001	100	SP-2.5-10	6020304001	100
End bracket, for TH 35-7.5, 15 width (mm)	EB/4 8	6020101006	50	EB/4 8	6020101006	50
	EB/3 10	6020101003	50	EB/3 10	6020101003	50
	EB/1 9.5	6020101001	50	EB/1 9.5	6020101001	50
Cross-connection	CC10-2.5 10-pos.	6020502009	10	CC10-2.5 10-pos.	6020502009	50
	CC3-2.5 3-pos.	6020502002	50	CC3-2.5 3-pos.	6020502002	50
	CC2-2.5 2-pos.	6020502001	50	CC2-2.5 2-pos.	6020502001	50
max. current (A)	24			24		
Bridge-comb	BC 10-2.5 10-pos.	6020504009	10	BC 10-2.5 10-pos.	6020504009	10
	BC 3-2.5 3-pos.	6020504002	50	BC 3-2.5 3-pos.	6020504002	50
	BC 2-2.5 2-pos.	6020504001	50	BC 2-2.5 2-pos.	6020504001	50
max. current (A)	24			24		
Test Socket	TS3/6/2.3	6020402001	50	TS3/6/2.3	6020402001	50
Screw Driver	0.5x3.0	-	-	0.5*3.0	-	-
Marking Tags	NS6	For details see Accessories		NS6	For details see Accessories	
Marking Holder	Marking Holder	6032100001	10	Marking Holder	6032100001	10
Strip Lable	SL	For details see Accessories		SL	For details see Accessories	
Color (Color Code is the last 2 digits of the Ordering No.)						
Dimensions (mm)	W / L / H			W / L / H		
Width/Length/Height, TH 35-7.5	6/45.2/42			6/45.2/48.5		
Width/Length/Height, TH 35-15	6/45.2/49.5			6/45.2/56		
Connection capacity						
Rigid Solid (mm ²)	0.5-4			0.5-4		
Rigid stranded (mm ²)	0.5-4			0.5-4		
Flexible (mm ²)	0.5-2.5			0.5-2.5		
American Wire Gauge (AWG)	20-12			20-12		
IEC test gauge	A3			A3		
Stripping length (mm)	10			10		
Clamping screw	M2.5			M2.5		
Tightening torque (N.m)	0.6			0.4-0.6		
Insulation material	PA			PA		