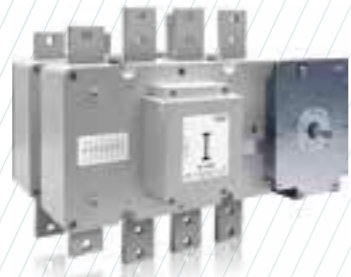
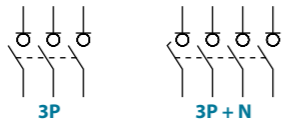


S5000F Changeover switch base mounting 3P - 3P+N

Size 4
A 1600|1800|2000



	CODE-1600A	CODE-1800A	CODE-2000A
3P	S5F16003PS0	S5F18003PS0	S5F20003PD0
3P+N	S5F16003NS0	S5F18003NS0	S5F20003ND0



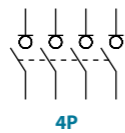
Technical information



According to IEC/EN 60947-3

		1600 1800 2000			
Rated thermal current	I _{th} in ambient at 40° C	A	1600	1800	2000
Rated insulation voltage	U _i	V	1000	1000	1000
Rated dielectric strength	50 Hz, 1 min.	V	10000	10000	10000
Rated impulse withstand voltage	U _{imp}	kV	12	12	12
AC Rated operational current ^{*(1)} (Rated operational frequency 50/60 Hz)	le 400V AC21A	A	1600	1800	2000
	400V AC22A	A	1600	1800	2000
	500V AC21A	A	1600	1800	2000
	500V AC22A	A	1250	1600	1800
	690V AC21A	A	1600	1800	1800
	690V AC22A	A	1000	1250	1600
	800V AC20A	A	1600	1800	2000
	1000V AC20A	A	1600	1800	2000
AC Rated operational power ^{*(2)}	Pe 3x400V AC23A	kW	554,2	692,8	692,8
	3x500V AC23A	kW	623,5	692,8	692,8
	3x690V AC23A	kW	602,3	764,8	764,8

		1600 1800 2000			
Rated capacitor power	400V, sen φ=0,65	kVAr	450,03	562,9	562,9
Rated breaking capacity	400V AC22A	A	4800	5400	6000
Rated making capacity	400V AC22A	A	4800	5400	6000
Short - circuit behaviour					
Short - circuit making capacity ^{*(3)}	I _{cm}	kA (peak)	75	75	75
Short - time withstand current (1 sec.)	I _{cw}	kA rms	50	50	50
Minimum number of mechanical operations ^{*(4)}		Cycles	3000	3000	3000
Minimum number of electrical operations	400V AC22A	Cycles	500	500	500
Maximum weight (3/4 poles)		Kg	42,9/47,3	42,9/47,3	42,9/47,3



Also available 4P changeover switches under request, consult reference

^{*(1)} Other voltages and /or utilization categories; please consult
^{*(2)} Indicative values, value cos φ=0,8
^{*(3)} Without limiting protective device (short - circuit maintained 50 ms. - 100 ms.)
^{*(4)} Please consult us for more operations

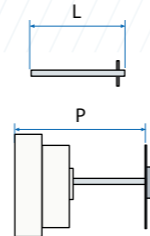
Accessories



Direct handle
CODE D5LLI32



External handle included shaft ^{*(e1)}
IP65|UL50E/NEMA 250
Types: 1, 3R, 4, 4X y 12
CODE D5LLA31



Shafts
Standard shaft included ^{*(e1)}
L (mm) P (mm)
239 418... 573
Shaft extensions
Consult



Terminal shrouds
CODE DS-CU41
(1 kit for input or output only front side)



Bridging links
CODE D5LPC42 (4 units)



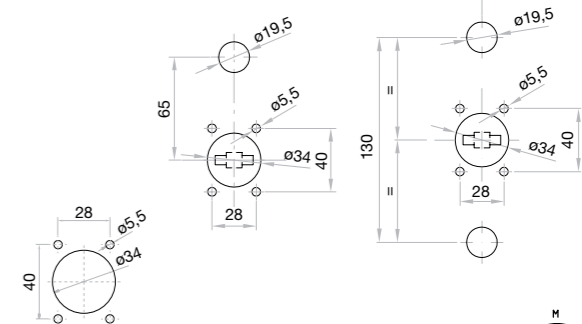
Auxiliary contacts
1NO+1NC CODE DS-AU11
2NO+2NC CODE DS-AU12
I_e = 16 A (resistive loads)
4 A (inductive loads) at 250 Vac.



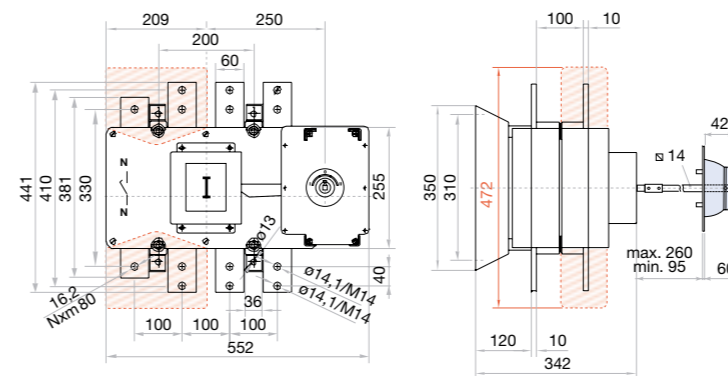
Safety key lock device
Simple CODE D5LCB41
Double CODE D5LCF41

For external handle, lock the handle by means of a key in position "OFF" (under request, in "ON"), the key can only be removed with the handle locked

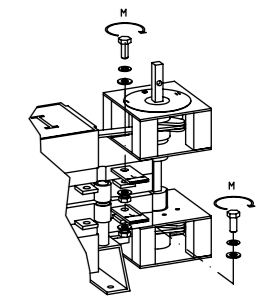
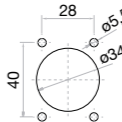
Door drilling for handle and keylock device



Dimensions (mm)



Door drilling for external handle



	H max (Cu)	L max (Cu)	M
1600 A	2x7	80	M14
1800 A			
2000 A			

